



## Heavy Duty PolyMaster

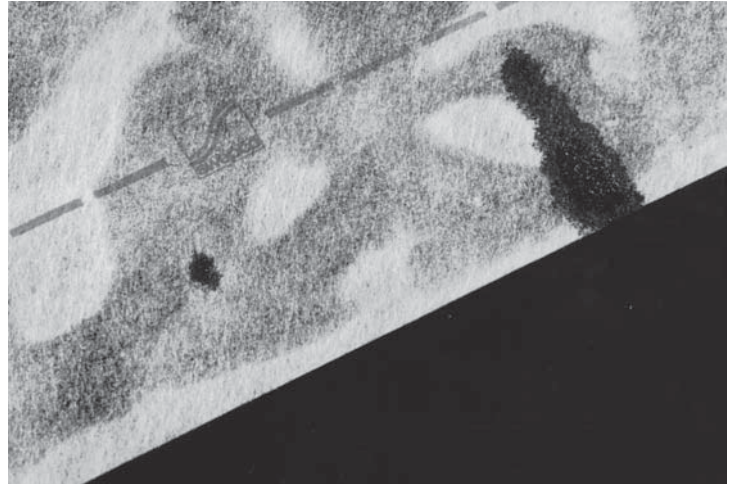
*... a tough polyester reinforcing fabric for total resurfacing or spot repair of smooth asphalt surface roofs which need more than simple patching and recoating*

### **Deteriorating Smooth Surface Asphalt Roofs Need Immediate Attention To Avoid Major Cost**

Smooth surface asphalt roofs with leaks, blisters, cracks, alligating or other signs of deterioration out in the open roof surface need immediate attention. If these signs are ignored when they first appear, the owner could face the high cost of roof removal and replacement in as short a time as six months. Unfortunately, roofs in this condition have aged beyond the point where simple patching and recoating will satisfy their maintenance needs. They need something stronger to put them back into reliable condition.

### **A Tough Reinforcing Fabric Especially Designed For Troubled Smooth Surface Asphalt Roofs**

Heavy Duty PolyMaster is a tough, 100% polyester reinforcing fabric especially designed for renewal of smooth surface asphalt roofs which need more than simple patching and recoating. Sandwiched between two coats of Guardian Seamless Roof Coating, Heavy Duty Roof Coating or Flex•Shield Roof Coating, it reinforces



the roof just like steel mesh reinforces concrete, adding great strength and durability. The result is a tough new roof membrane right over the old one.

### **Stronger Than It Has To Be**

This unique process of embedding Heavy Duty PolyMaster between two layers of a SWEPCO Cold Process waterproofing coating produces a one piece, seam-free membrane with exceptional performance characteristics. The new membrane has superior resistance to cracking caused by structural stress and to splitting caused by rapid temperature changes. Polyester reinforcing also provides exceptional resistance to splitting, cracking, tearing and impact damage because it has the ability to expand, contract and flex with destructive stresses to a much greater degree than other types of roof membranes. And that means longer service life and fewer maintenance problems.

PERFORMANCE



### **Nine Times Stronger, 10,000 Times More Flexible, & 20 Times More Stretchable**

Heavy Duty PolyMaster is an exceptionally tough 100% polyester reinforcing fabric. Laboratory tests designed to show the relative strengths of roof reinforcements have proven Heavy Duty PolyMaster is as much as 10,000 times more flexible, up to 20 times more stretchable and up to nine times as strong as conventional fiberglass and organic roofing felts. That's significantly more strength and flexibility than is required to handle typical roof stresses.

### **Designed To Stay Strong**

And Heavy Duty PolyMaster Roofs stay strong through the years because they're created from the very finest waterproofing materials . . . SWEPCO's world famous line of Waterproofing Products.

These premium quality SWEPCO waterproofing materials form a super tough, attractive, weather resistant surface which shields the original roof membrane from the natural weathering cycle. And the new roof surface won't weather like the old one did because it has superior resistance to oxidation, age hardening, cracking, alligating, blistering, checking, erosion and corrosion from industrial pollutants.

### **Simple, Easier, Faster, Less Costly Installation**

Choosing a Heavy Duty PolyMaster Roof means more of the roofing expenditure goes for high quality waterproofing protection and less goes for labor. SWEPCO Products are designed for easy, fast and simple application. SWEPCO Products are applied "cold", just as they come from the container. No special preparation of the products. No dangerous heating. No smelly kettles or pollution. No special, costly equipment. And no big roofing crews.

### **Cuts Future Maintenance Costs**

The modern, smooth, seam free surface made possible by Heavy Duty PolyMaster and a SWEPCO Cold Process Coating is easier and less costly to inspect and maintain. Periodic inspection becomes a task measured in minutes instead of hours. Minor problems can be detected before they become major problems. And, if maintenance does finally become necessary, it costs less because it takes less time. As a consequence, Heavy Duty PolyMaster roofs insure continued savings beyond their guaranteed service life.

### **Great For New Roof Applications Too**

Heavy Duty PolyMasters's many benefits also make it a great choice for new roof applications as well as maintenance applications. Ease of application and light weight reduce construction costs and the modern smooth surface insures low cost maintainability through the years.

### **Coverage Rate:**

1 Roll of Heavy Duty PolyMaster covers 1,000 Square Feet (93 M2)

**Note:** See Product Container Label, Product Data Bulletin and appropriate system installation instructions for complete application information.

## **Southwestern Petroleum Corporation**

P.O. Box 961005 • Fort Worth, TX 76161-0005 • Phone: (800)877-9372 or (817)332-2336 • Fax: (817)877-4047 • Web: [www.swepcousa.com](http://www.swepcousa.com)  
Southwestern Petroleum Europe • Industrieweg 6 • B-2390 Oostmalle (Antwerp) Belgium • Phone: (32-3)312 31 41 • Fax: (32-3)311 72 77  
Southwestern Petroleum Canada • 87 West Drive • Brampton (Toronto), Ontario, Canada L6T 2J6 • Phone: (905)457-0511 • Fax: (905)457-0637