

PRODUCT DATA BULLETIN II

HEAVY DUTY PATCHING FABRIC

DESCRIPTION AND PURPOSE:

Heavy Duty Patching Fabric is an organic glass-fiber mesh which has been thoroughly coated with specially prepared asphalt. It has an open weave design with a thread count of 20 x 20 per inch (25 mm). In addition to being an integral component of SWEPCO's approved flashing designs, it is ideal for reinforcing patches and repairs made with Heavy Duty Patching Compound and SWEPCO Flex•Shield Patching Compound.

GENERAL DATA:

TYPICAL PHYSICAL PROPERTIES

Unit Weight, lb/100 ft ² (kg/m ²)	1.3 lb (0.6 kg)
Thread Count per inch (25.4 cm)	
Wrap Thread	20 ± 1
Filling Thread	20 ± 1
Average Tensile Strength, @70°F (21.1°C), both directions, lb f/in (N/mm)	85 (14.8)
Color	Black
Storage Stability	Indefinite
Flash Point, T.O.C., °F	450

TYPICAL PERFORMANCE PROPERTIES

Resistance to Acids and Alkali	Good
Resistance to Rot and Mildew	Good
Fire Resistance	Will not support combustion

TYPICAL CHEMICAL PROPERTIES

Saturant, % wt	48
Glass Fibers, % wt	52
Saturant	Asphalt

APPLICABLE SPECIFICATIONS

ASTM D-1668 TYPE III
U.S. Federal Specification HH-C-00466, Type I
Canadian Government Specification Board Standard 37-GP-63M



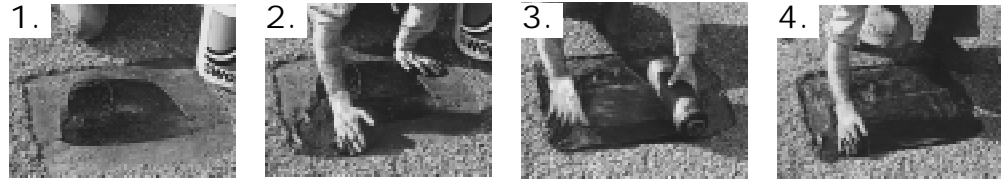
APPLICATION INFORMATION:

Heavy Duty Patching Fabric is designed for use with Heavy Duty Patching Compound and SWEPCO Flex•Shield Patching Compound for sealing and patching in both maintenance work and for new roof construction.

SURFACE PREPARATION: All areas to be patched, sealed or repaired must be clean and free of all loose gravel, embedded gravel, dust, dirt and debris which inhibit good bonding.

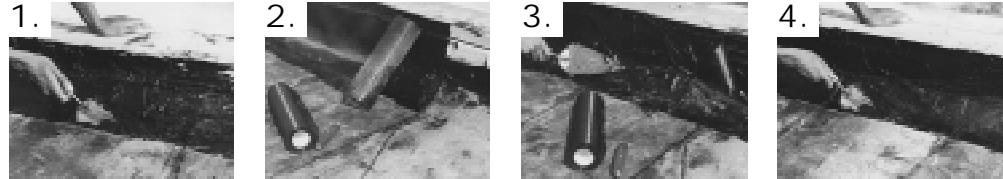
APPLICATION PROCEDURE: Patching and sealing techniques are thoroughly outlined under "Application Information" for Heavy Duty Patching Compound, SWEPCO Flex•Shield Patching Compound and SWEPCO's Built-Up Roof System General Specification Flashing Details. Patching Fabric is embedded between two coats of Heavy Duty or Flex•Shield Patching Compound, each at the rate of ½ lb. per square foot (2.44 kg/m²). Each layer will be approximately 3/16 inch (0.3 cm) thick. The second layer should be smoothed with a trowel and should extend beyond the ends of the Patching Fabric.

REPAIRING BLISTERS



1. Cut out the roofing felts causing the blister or bulge and spud any gravel back a minimum of 4 in. (10.16 cm) from the blister or bulge. Let dry, if wet. 2. Apply SWEPCO Patching Compound to the repair area and 4 in. (10.16 cm) onto the unexposed roof area at the rate of ½ lb. per square foot (2.44 kg/m²). 3. Embed a piece or pieces of SWEPCO Patching Fabric into the Patching Compound. 4. Apply another of Patching Compound over the Patching Fabric at the rate of ½ lb. per square foot (2.44 kg/m²), thoroughly working it to a smooth feather edge beyond the edges of the Patching Fabric.

SEALING NEW OR OLD FLASHINGS



1. Remove any loose or deteriorated flashing materials and spud or scrape any existing gravel or aggregate off area to be repaired. Let dry, if wet. Apply SWEPCO Patching Compound at the rate of ½ lb. per square foot (2.44 kg/m²). Patching Compound must extend up under existing counter flashing, if any, and a minimum of 4 in. (10.16 cm) onto flat roof membrane or 4 in. beyond any existing flashing materials or metal flanges, whichever is greatest. 2. Embed into this a strip of Patching Fabric of appropriate width and length. 3. Now apply SWEPCO Patching Compound over the entire area at the rate of ½ lb. per square foot (2.44 kg/m²). 4. Smooth and finish off with trowel to a feather edge, carrying the Patching Compound beyond the ends of the Patching Fabric.

REPAIRING CRACKS, SPLITS, CUTS, TEARS AND OPEN SEAMS

1. Remove any loose or deteriorated materials and spud or scrape any existing gravel or aggregate off area to be repaired. Let dry if wet. Trowel SWEPCO Patching Compound over the area to be repaired and a minimum of 3 in. (7.5 cm) onto sound existing membrane on all sides at the rate of ½ lb. per square foot (2.44 kg/m²). 2. Embed into this a strip of Patching Fabric of appropriate width and length. 3. Follow with an application of SWEPCO Patching Compound over the entire patch at the rate of ½ lb. per square foot (2.44 kg/m²). 4. Smooth and finish off with a trowel to a feather-edge beyond the edges of the Patching Fabric.

**SOUTHWESTERN
PETROLEUM
CORPORATION
FORT WORTH,
TEXAS U.S.A.**

