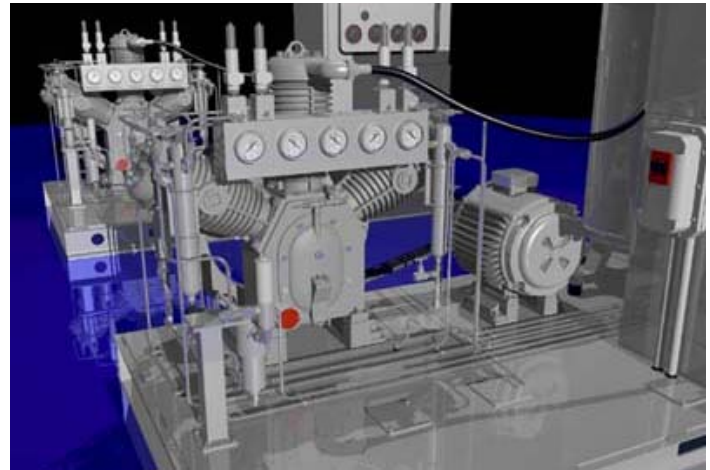


## Reciprocating Compressor Oil

SWEPACO 707 Reciprocating Compressor Oil is a premium quality oil formulated specifically for the demanding requirements of air and water cooled industrial reciprocating compressors, for both crankcase and cylinder lubrication. SWEPACO 707 provides the uniform, sparing lubrication these types of compressors demand for proper performance. It also prevents the carbon deposits which can cause sticky valves, compression leaks and excessive operating temperatures.



- Formulated for long service life
- Specifically designed for reciprocating compressors
- Resistant to carbon build up in channel valves and cylinders
- Protects against wear and piston scuffing
- USDA/NSF H2 or CFIA n1 compliance in closed lube systems in food processing applications
- Exceptional performance in refrigeration compressors
- Excellent thermal stability, low volatility
- Resistant to high temperature oxidation, varnish and sludge
- Reduces power consumption/operating costs



## Purpose & Description

SWEPCO 707 Compressor Oil is a premium quality compressor oil, designed specifically for the demanding requirements of air and water cooled reciprocating compressors. It is recommended for both crankcase and cylinder lubrication. SWEPCO 707 Compressor Oil can be used in units with cylinders up to 26" in diameter which discharge at temperatures below 375° F (190°C). The compressor should operate on dry gases which do not carry suspended liquid. These gases may, however, contain water or other condensibles which remain in a superheated vapor state throughout the compression cycle.†

### Superior performance

Cylinders in compressors of this type require uniform, sparing lubrication for proper performance. Excessive oil distribution creates carbon deposits which cause sticky valves, compression leaks and high operating temperatures.

SWEPCO 707 Compressor Oil helps prevent carbon "build-up" in channel valves and cylinders. Its uniform distribution characteristic produces controlled lubrication and helps keep pistons and valves carbon-free, thus reducing risk of fire and explosion. In terms of performance, this means peak performance from reciprocating compressors and maximum equipment life for the user.


SWEPCO 707 Compressor Oil is formulated with the highest quality base stocks and a hard working additive package which provides complete protection for reciprocating compressors. SWEPCO's highly effective provides protection against oxidation, sludge and varnish. Other additives deliver superior protection from rust, corrosion and foaming, which are other common causes of malfunctions and performance problems.

† **Important note: Under no circumstances should any petroleum-based lubricant be used in equipment compressing pure oxygen.**

## Typical Physical & Performance Properties

SAE (ISO) Grade	10 (32)	20 (68)	30 (100)	35 (150)	40 (220)
API Gravity @ 60° F	23.7	24.1	24.4	24.8	25.2
Flash Point, COC, ° F	360	400	430	435	440
Viscosity, SUS @ 210° F	44	53	60	67	76
Viscosity, cSt @ 40° C	32	68	100	150	220
Viscosity, cSt @ 100° C	5.34	8.17	10.5	12.2	14.3
Pour Point, ° F (° C), Max	-50(-46)	-35(-38)	-25(-31)	-15(-26)	-5(-21)
Floc Point, ° F (° C), Max	-70(-57)	-65(-54)	-60(-51)	-55(-49)	-50(-46)

Note: Some weights are considered special order items and require minimum quantities and extended lead times. Consult a current price list for available weights in your area.



**A Product of SPX Technology™.**

... the cutting edge performance SWEPCO Customers have come to expect.



## Southwestern Petroleum Corporation

Fort Worth, Texas • Phone: (800)359-5823 or (817)332-2336 • Fax: (817)348-7237 • Web: [www.swepcousa.com](http://www.swepcousa.com)  
 Southwestern Petroleum Europe • Southwestern Petroleum Canada